

## Grammar

### Making Simple Inquiries / Telling the Time

Filmlerle ilgili bilgi alırken aşağıdaki soru ve cevap kalıplarını kullanınız.

- What is the name of the movie? (Filmin adı ne?)  
It is Shrek. (Filmin adı Shrek.)
- What is the movie about? (Film ne ile ilgili?)  
It is about four kids' adventures. (Dört çocuğun maceralarıyla ilgili.)
- When is the movie on? (Film ne zaman?)  
It is on next Saturday. (Gelecek Cumartesi günü.)  
It is on 9 November. (9 Kasım'da.)
- Who is your favourite character? (En sevdiğin karakter kim?)  
I love Monana. (Moana'yı seviyorum.)
- What is your favourite movie? (En sevdiğin film ne?)  
It is 'Ice Age'. (Buz Devri.)

Filmin ne zaman başlayacağını sorarken ve cevabını verirken aşağıdaki soru cevap kalıbını kullanınız.

- What time does the movie start? (Film kaçta başlıyor?)  
It starts at 7 p.m. (Akşam 7'de başlıyor.)

### UNIT 6 EXERCISE 1: Order the words to make sentences.

1. is / movie / What / your / favourite

\_\_\_\_\_.

2. movie / When / on / is / the

\_\_\_\_\_.

3. are / Who / characters / the / of the movie

\_\_\_\_\_.

4. the / movie / is / What / about

\_\_\_\_\_.

5. is / time / movie / What / the

\_\_\_\_\_.

### EXERCISE 2: Circle the correct word.

1

The movie is **on** / **in** at the Sunshine Movie Theatre.

2

My favourite movie **theatre** / **character** is Heidi.

3

**Who** / **Where** is your favourite movie character?

4

Harry Potter is **at** / **on** 11 October.

5

What is / **are** your favourite movie?

**EXERCISE 3:** What can we learn in the poster about the movie? Put tick (✓) if you can find the answer or cross (✗) if you can't to the questions below.

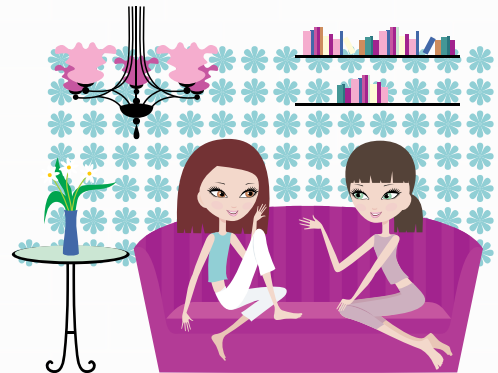


	✓	✗
1. Who are the characters?		✗
2. When is the movie on?	✓	
3. What time is the movie on?	✓	
4. What is the movie about?		✗
5. What's the name of the movie?	✓	

**EXERCISE 4:** Fill in the blanks with the words below.



- Mona** : I (1) \_\_\_\_\_ really bored.
- Kelly** : I have some DVDs. What about (2) \_\_\_\_\_ a movie?
- Mona** : OK, but I (3) \_\_\_\_\_ sci-fi movies. Don't choose that type of movie, please.
- Kelly** : Let's watch "Moana" then.
- Mona** : What (4) \_\_\_\_\_ of movie is it?
- Kelly** : It is an animation.
- Mona** : Good, I (5) \_\_\_\_\_ animations. What is it (6) \_\_\_\_\_ ?
- Kelly** : (7) \_\_\_\_\_ about a brave girl's adventures.
- Mona** : (8) \_\_\_\_\_ are the characters?
- Kelly** : Moana and some animals.
- Mona** : That sounds good. (9) \_\_\_\_\_ watch it.



**EXERCISE 5:** Answer the questions according to you.

- Do you like watching movies? \_\_\_\_\_ .
- Do you watch movies at the movie theatre? \_\_\_\_\_ .
- What's your favourite movie? \_\_\_\_\_ .
- What type of movies do you like? \_\_\_\_\_ .
- Who is your favourite movie character? \_\_\_\_\_ .

## Grammar

### Describing Characters / Stating Personal Opinions / Expressing Likes and Dislikes

Film karakterleri ile ilgili soru sorarken ve cevap verirken aşağıdaki cümle kalıplarını kullanınız.

Who are the characters? (Karakterler kim?)

What do you think about the characters? (Karakterler hakkında ne düşünüyorsun?)

He is evil. (O kötüdür.) She is brave. (O cesurdur.) They are honest. (Onlar dürüştür.)

Bir konu hakkında düşünce sorarken ve cevap verirken aşağıdaki soru-cevap kalıplarını kullanınız.

What do you think about Sid? (Sid hakkında ne düşünüyorsun?)

I think it is funny. (Bence o komiktir.)

What do you think about the movie? (Filmle ilgili ne düşünüyorsun?)

I think it is interesting. (Bence o ilginçtir.)

Hoşlandığımız ve hoşlanmadığımız konular hakkında konuşurken şu yapıları kullanınız.

I like science fiction movies. (Bilim kurgu filmlerini severim.)

I like/love brave characters. (Cesur karakterlerden hoşlanırım / karakterleri severim.)

I dislike/hate/don't like evil characters. (Kötü karakterlerden hoşlanmam/nefret ederim/hoslanmam.)

### EXERCISE 1: Order the words to make sentences.

#### UNIT 6

1. dramas / boring / Mary / are / thinks

2. watching / Judy and / like / Sam / movies

3. rude and / Shrek / ugly / is

4. entertaining / I / are / think / animations

5. movies / I / watching / dislike / horror

### EXERCISE 2: Order the words to make sentences.

1

I **like / dislike** sci-fi movies. They are boring.

2

Mary **think / thinks** comedies are enjoyable.

3

Ben's favourite movie type is action. He **loves / hates** them.

4

Rose **loves / dislikes** lazy characters. Her favourite is a brave character.

5

Funda's favourite movie characters **is / are** Brad Pitt and Angelina Jolie.

**EXERCISE 3:** Look at the table and write 'True' or 'False' for the sentences according to the table below.

OPINIONS ABOUT MOVIE TYPES				
Movie Types	Bob	Tim	Judy	Carla
Horror		interesting	boring	
Musical	pleasant		entertaining	
Drama		great		boring
Science Fiction	absurd			exciting

1. Tim likes dramas, but Carla doesn't.
2. Bob dislikes sci-fi, but Carla does.
3. Judy likes watching horror movies, but she dislikes musicals.
4. Bob and Judy like musicals.
5. Tim thinks horror movies are terrible.

---



---



---



---



---

**EXERCISE 4:** Complete the texts with the words in the boxes.



\* dislike  
 \* are  
 \* think  
 \* love  
 \* can



I \_\_\_\_\_ Spiderman is brave. He \_\_\_\_\_ fly and run fast. I \_\_\_\_\_ strong characters because I \_\_\_\_\_ lazy and evil characters. Bad characters \_\_\_\_\_ boring.

I \_\_\_\_\_ Hulk. He \_\_\_\_\_ ugly. He \_\_\_\_\_ kind, either. He \_\_\_\_\_ not fly. I \_\_\_\_\_ he can't control his emotions.



\* can  
 \* is  
 \* think  
 \* hate  
 \* isn't



**EXERCISE 5:** Complete the sentences according to your opinions about the given topics.

1. Horror movies \_\_\_\_\_.
2. Ugly characters \_\_\_\_\_.
3. Brave characters \_\_\_\_\_.
4. Animations \_\_\_\_\_.
5. Movie theatres \_\_\_\_\_.