

Grammar

Making Simple Inquiries / Telling the Time

Filmlerle ilgili bilgi alırken aşağıdaki soru ve cevap kalıplarını kullanınız.

- What is the name of the movie? (Filmin adı ne?)
It is Shrek. (Filmin adı Shrek.)
- What is the movie about? (Film ne ile ilgili?)
It is about four kids' adventures. (Dört çocuğun maceralarıyla ilgili.)
- When is the movie on? (Film ne zaman?)
It is on next Saturday. (Gelecek Cumartesi günü.)
It is on 9 November. (9 Kasım'da.)
- Who is your favourite character? (En sevdiğin karakter kim?)
I love Monana. (Moana'yı seviyorum.)
- What is your favourite movie? (En sevdiğin film ne?)
It is 'Ice Age'. (Buz Devri.)

Filmin ne zaman başlayacağını sorarken ve cevabını verirken aşağıdaki soru cevap kalıbını kullanınız.

- What time does the movie start? (Film kaçta başlıyor?)
It starts at 7 p.m. (Akşam 7'de başlıyor.)

UNIT 6 EXERCISE 1: Order the words to make sentences.

1. is / movie / What / your / favourite

What is your favourite movie?

2. movie / When / on / is / the

When is the movie on?

3. are / Who / characters / the / of the movie

Who are the characters of the movie?

4. the / movie / is / What / about

What is the movie about?

5. is / time / movie / What / the

What time is the movie?

EXERCISE 2: Circle the correct word.

1

The movie is on / in at the Sunshine Movie Theatre.

2

My favourite movie theatre / character is Heidi.

3

Who / Where is your favourite movie character?

4

Harry Potter is at / on 11 October.

5

What is / are your favourite movie?

EXERCISE 3: What can we learn in the poster about the movie? Put tick (✓) if you can find the answer or cross (✗) if you can't to the questions below.

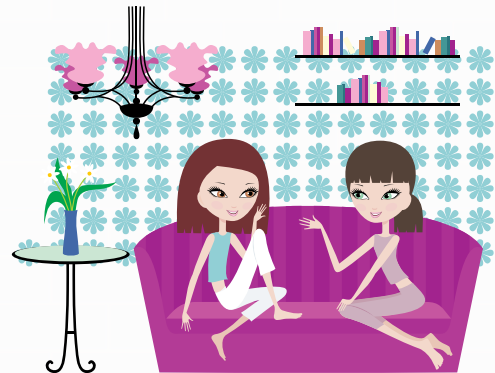


| | ✓ | ✗ |
|----------------------------------|---|---|
| 1. Who are the characters? | | ✗ |
| 2. When is the movie on? | ✓ | |
| 3. What time is the movie on? | ✓ | |
| 4. What is the movie about? | | ✗ |
| 5. What's the name of the movie? | ✓ | |

EXERCISE 4: Fill in the blanks with the words below.



- Mona** : I (1) am really bored.
- Kelly** : I have some DVDs. What about (2) watching a movie?
- Mona** : OK, but I (3) dislike sci-fi movies. Don't choose that type of movie, please.
- Kelly** : Let's watch "Moana" then.
- Mona** : What (4) type of movie is it?
- Kelly** : It is an animation.
- Mona** : Good, I (5) like animations. What is it (6) about ?
- Kelly** : (7) It is about a brave girl's adventures.
- Mona** : (8) Who are the characters?
- Kelly** : Moana and some animals.
- Mona** : That sounds good. (9) Let's watch it.



EXERCISE 5: Answer the questions according to you.

- Do you like watching movies? Students' own answers
- Do you watch movies at the movie theatre? Students' own answers
- What's your favourite movie? Students' own answers
- What type of movies do you like? Students' own answers
- Who is your favourite movie character? Students' own answers

Grammar

Describing Characters / Stating Personal Opinions / Expressing Likes and Dislikes

Film karakterleri ile ilgili soru sorarken ve cevap verirken aşağıdaki cümle kalıplarını kullanınız.

Who are the characters? (Karakterler kim?)

What do you think about the characters? (Karakterler hakkında ne düşünüyorsun?)

He is evil. (O kötüdür.) She is brave. (O cesurdur.) They are honest. (Onlar dürüştür.)

Bir konu hakkında düşünce sorarken ve cevap verirken aşağıdaki soru-cevap kalıplarını kullanınız.

What do you think about Sid? (Sid hakkında ne düşünüyorsun?)

I think it is funny. (Bence o komiktir.)

What do you think about the movie? (Filmle ilgili ne düşünüyorsun?)

I think it is interesting. (Bence o ilginçtir.)

Hoşlandığımız ve hoşlanmadığımız konular hakkında konuşurken şu yapıları kullanınız.

I like science fiction movies. (Bilim kurgu filmlerini severim.)

I like/love brave characters. (Cesur karakterlerden hoşlanırım / karakterleri severim.)

I dislike/hate/don't like evil characters. (Kötü karakterlerden hoşlanmam/nefret ederim/hoslanmam.)

EXERCISE 1: Order the words to make sentences.

UNIT 6

1. dramas / boring / Mary / are / thinks Mary thinks dramas are boring.

2. watching / Judy and / like / Sam / movies Judy and Sam like watching movies.

3. rude and / Shrek / ugly / is Shrek is rude and ugly.

4. entertaining / I / are / think / animations I think animations are entertaining.

5. movies / I / watching / dislike / horror I dislike watching horror movies.

EXERCISE 2: Order the words to make sentences.

1 I like / dislike sci-fi movies. They are boring.

2 Mary think / thinks comedies are enjoyable.

3 Ben's favourite movie type is action. He loves / hates them.

4 Rose loves / dislikes lazy characters. Her favourite is a brave character.

5 Funda's favourite movie characters is / are Brad Pitt and Angelina Jolie.

EXERCISE 3: Look at the table and write 'True' or 'False' for the sentences according to the table below.

| OPINIONS ABOUT MOVIE TYPES | | | | |
|----------------------------|----------|-------------|--------------|----------|
| Movie Types | Bob | Tim | Judy | Carla |
| Horror | | interesting | boring | |
| Musical | pleasant | | entertaining | |
| Drama | | great | | boring |
| Science Fiction | absurd | | | exciting |

1. Tim likes dramas, but Carla doesn't.
2. Bob dislikes sci-fi, but Carla does.
3. Judy likes watching horror movies, but she dislikes musicals.
4. Bob and Judy like musicals.
5. Tim thinks horror movies are terrible.

True

True

False

True

False

EXERCISE 4: Complete the texts with the words in the boxes.



* dislike
 * are
 * think
 * love
 * can



I think Spiderman is brave. He can fly and run fast. I love strong characters because I dislike lazy and evil characters. Bad characters are boring.

I hate Hulk. He is ugly. He isn't kind, either. He can not fly. I think he can't control his emotions.



* can
 * is
 * think
 * hate
 * isn't



EXERCISE 5: Complete the sentences according to your opinions about the given topics.

1. Horror movies Students' own answers
2. Ugly characters Students' own answers
3. Brave characters Students' own answers
4. Animations Students' own answers
5. Movie theatres Students' own answers